

Mentor SILVA CUP 2024

International Orienteering Event

Enjoy **3** days of

wild
Orienteering
in Romania!

04 - 06 October 2024

Curtea de Argeş - Argeş County

Sprint, 7 Legs Mixed Relay & Middle WRE



XLAB SOLUTIONS



FEDERAȚIA ROMÂNĂ
DE ORIENTARE



**Mentor
SILVA**

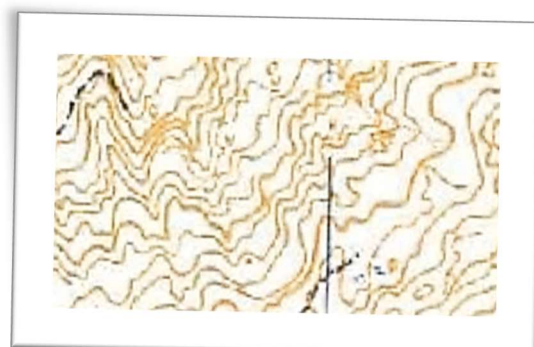
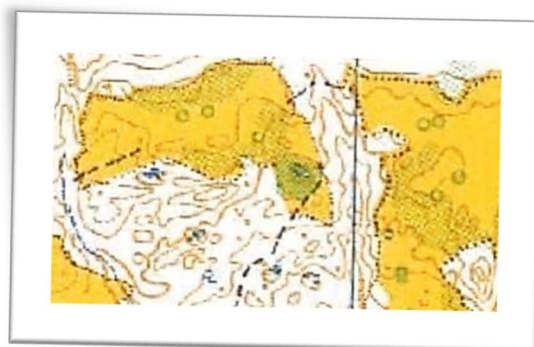
mentorsilva.ro

Enjoy 3 spectacular races in
Curtea de Argeș, Romania,
04 – 06 October 2024

General information

3 Days Event Mentor Silva Cup 2024.

- ▲ **Sprint**
- ▲ **7 Legs Mixed Relay (3rd edition)**
- ▲ **WRE Middle Distance**



Organizers

Main organizer: Mentor Silva Club Bucharest – <https://mentorsilva.ro>

National controller: Niculina MAIORESCU

I.O.F. Adviser: Gabriel MAIORESCU

Sponsors and partners:

Calendar of the event

October, the 4th – Sprint, National Championship Sprint Stage Event

October, the 5th - 7 Legs Mixed Relay

October, the 6th – Middle Distance – World Ranking Event (M21E, W21E)

Schedule

Day	Hours	Event	Location
Friday October 4 th	14:00 – 16:00 16:10 16.30	Registration of participants Distribution of participation kits and sponsors' gifts. Quarantine closes Mentor Silva Cup – Sprint National Championship Sprint Stage Event Start	Curtea de Arges, coordinates 45.15543026, 24.67301577
Saturday October 5 th	8:00 – 9.00 10:00	Registration of participants Distribution of participation kits and sponsors' gifts. Mentor Silva Cup – 7 Legs Mixed Relay	Zigoneni GPS coordinates 45.08584998, 24.68849036
Sunday October 6 th	10:00 14:00	Mentor Silva Cup – Middle Distance WRE Prize Giving Ceremony for Sprint, Relay and Middle Distance	Zigoneni GPS coordinates 45.08584998, 24.68849036

Terrain

- ▲ **Sprint** - Urban area with paved alleys, parks, and buildings
- ▲ **7 Legs Mixed Relay and Middle Distance** – New maps of beautiful orienteering challenging forest, hilly, with intricate contour details.

Technical Data

▲ **Sprint, 4 October, Curtea de Argeș, GPS 45.15543026, 24.67301577**

Parking is possible on street 1Decembrie 1918, next to Manole Park (Parcul lui Manole), the Event Centre.

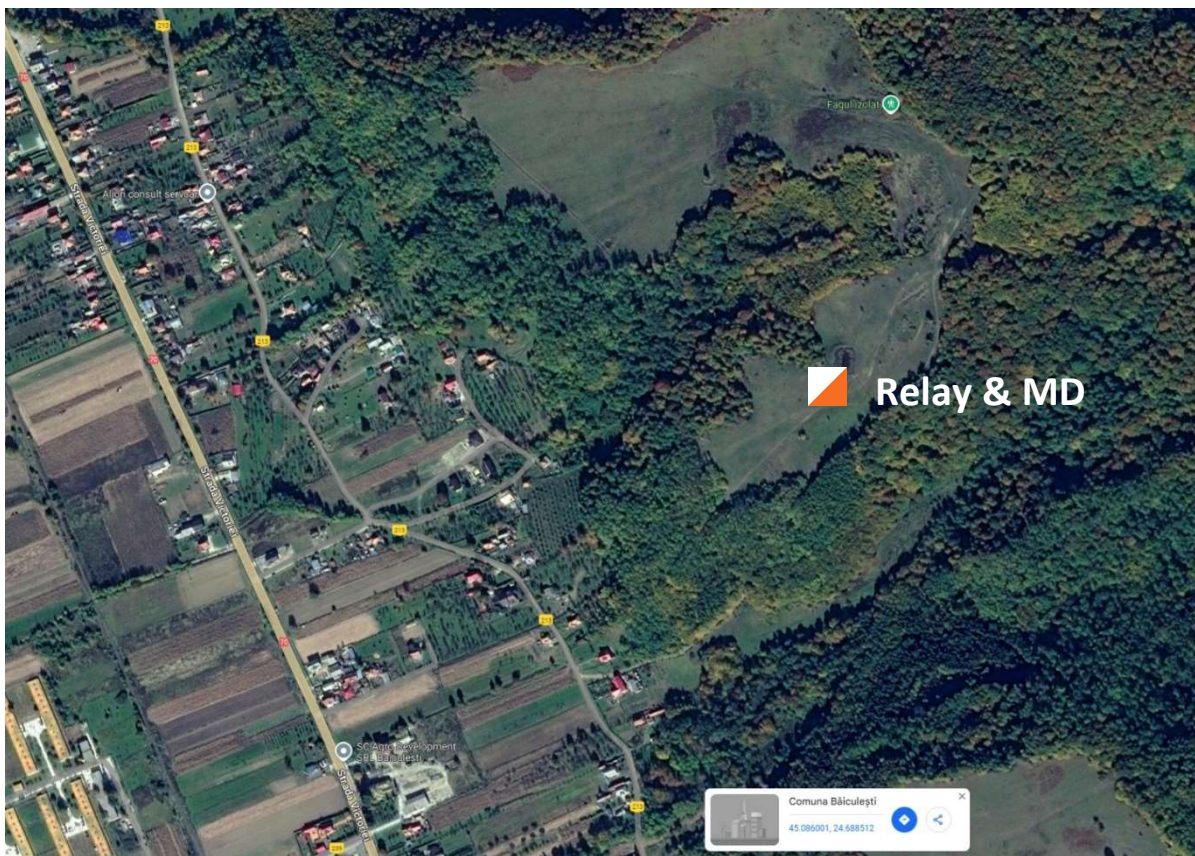
Distance from Event Centre to Quarantine and Start: 1150m, marked route. The Quarantine area is provided with access to toilets. In the Finish area, the public toilet will be marked on the map.

The traffic is not restricted! The main street should be crossed on Zebra crossing, where policemen will be present.

Category	Length (minimum real distance in km)	PC
A_M16/18	4	20
B_W16/18/45/	3.3	17
C_M14	1.9	14
D_W14	1.6	12
E_M75	1.9	14
F_W70/M80	1.66	12
A-M21/35	4	20
B-W21/35/M45	3.3	17
C-M12	1.9	14
D-W12, Open	1.6	12
E_WM55/65	1.9	14

Relay, 5 October, Zigoneni, GPS 45.08584998, 24.68849036

Leg	Category	Length (km)	PC	Map scale	Course type
1	Kids1	2.3	15	1: 5000	Butterfly
2	Masters 2	2.3	14	1: 7500	Relay combination
3	Kids 2	2.5	14	1: 7500	Relay combination
4	Juniors	3.0	15	1: 7500	Relay combination
5	Masters 1	3.2	16	1: 7500	Relay combination
6	Elite 2	3.9	18	1: 7500	Relay combination
7	Elite 1	4	17	1: 7500	Relay combination



▲ Middle Distance – WRE, 6 October, GPS 45.08584998, 24.68849036

Category	Length (km)	Climb (m)	CP
M12	2.2	80	12
M14	2.5	90	13
M16	3.0	135	14
M18	3.9	155	17
M20	4.6	210	19
M21	4.6	210	19
M35	4.6	210	19
M40	3.9	155	17
M45	3.9	155	17
M50	3.0	135	14
M55	3.0	135	14
M60	2.5	75	14
M65	2.5	75	14
M70	1.9	50	11
M75	1.9	50	11
Open	2.2	80	12
Open Th.	1.9	50	11
W12	2.2	80	12
W14	2.3	80	13
W16	2.5	75	14
W18	3.0	135	14
W20	3.9	155	17
W21	3.9	155	17
W35	3.9	155	17
W55	2.5	75	14
W60	1.9	50	11
W65	1.9	50	11

Classes and Rules

▲ Sprint - National Championship Sprint Stage Event

MW12, MW14, MW16, MW18, MW20, MW21E, MW35, MW40, MW45, MW50, MW55, MW60, MW65, MW70, MW75, MW80, Open, Open Th., Open Family

▲ 7 Legs Mixed Relay

- Relay teams may be formed of athletes belonging either to the same club, or to other clubs. However, every relay must include **at least 3 female** athletes.
- Every team will align 7 relay athletes, running in the order and classes mentioned below:

Relay leg	Category	Equivalent
1	Kids 1	M/W 12
2	Masters 2	M/W 55 *
3	Kids 2	M/W 16
4	Juniors	M/W 20
5	Masters 1	M/W 45
6	Elite 2	M/W 35
7	Elite 1	M/W21

- Every relay team must have a captain (it could be the coach or other person). The captain will decide the distribution of runners in his relay, according to the required order, taking into consideration that at least 3 female athletes must run the relay.
- Every captain may invoke the right for “Jolly Joker”, only one time, during the 3rd leg. If the relay team decides they have lost too much time in the first three legs, they may ask for Early Elite. This means that either Elite1 or Elite2 may run in the 4th leg and, instead, the Junior will take the 6th or the 7th leg. The captain’s decision must be communicated to the organizer during the 3rd leg, before the 3rd leg runner arrives at the spectators’ control.
- Runners in category W14 are accepted to run on the courses M/W55. However, they must be aware of the technical level of the race, specific to this Masters category.
- Relays with delayed legs must wait until the first 6 relays arrive, to take earlier starts in race.

▲ WRE Middle Distance

The classes for Mentor Silva Cup Middle Distance race are:

MW12, MW14, MW16, MW18, MW20, MW21E, MW35, MW40, MW45, MW50, MW55, MW60, MW65, MW70, MW75, MW80, Open, Open Th, Open Family.

Entry fees

Race	Classes	Until 1 July 2024	Until 1 August 2024	Until 28 September 2024
Sprint	M/W 12, 14, Open, Open Family	3 EUR	3 EUR	4 EUR
	M/W16,18, 65, 70, 75	6 EUR	6 EUR	7 EUR
	M/W 20, 21, 35, 40, 45, 50, 55, 60	8 EUR	8 EUR	9 EUR
Middle Distance	M/W 12, 14, 16	7 EUR	9 EUR	10 EUR
	M/W18, 20, 35, 40, 45, 50, 55, 60, 65, 70, 75, Open, Open Th, Open Family	9 EUR	11 EUR	12 EUR
	M/W21	10 EUR	13 EUR	15 EUR
Relay	The fee is for the entire 7 athletes relay team.	250 EUR	270EUR	300 EUR
		The relay consisting of 7 members from the same club finishing the race, will receive back a bonus of 200 EUR.		

- Registration will be through platform orienteeringonline.net
- If needed, entries can be submitted via our e-mail: mentor_silva@yahoo.co.uk
- Elite classes – M/W21, just for the third stage – MD, should make an additional entry through the IOF Eventor Page.
- Entry is not valid until the entry fee is received in the organizer's account.
- All fees have to be paid either in EURO, or in Romanian currency (RON), in advance, to bank account, until the deadline for entries.
- No entries will be accepted for Relay after the last deadline. For Middle Distance, later entries may be accepted if vacant positions in the start list are available.
- Invoice shall be sent by email 3 days after the payment has been registered.

Banking details

Asociația Club Sportiv Mentor Silva

Adress: Calea Mosilor 310, Bl.58BIS, Ap. 32, Sector 2, Bucharest

- For **EUR** payments:

IBAN: RO85 BTRL EURC RTOP 8968 1701

- For **RON** payments:
IBAN: RO03 BTRL RONC RTOP 8968 1701

Ceremonies and awards

Prize Giving Ceremony will be held on 8th of October, starting with 14:00. The stages will be awarded separately, thus:

▲ 7 Legs Mixed Relay

1st place – 3000 Eur + entry fee paid for the future edition of Mentor Silva Cup for Kids 1, Kids 2 and Juniors.

2nd – 1800 Eur + entry fee paid for the future edition of Mentor Silva Cup for Kids 1 and Kids 2.

3rd – 1200 Eur entry fee paid for the future edition of Mentor Silva Cup for Kids 1.

▲ WRE Middle Distance and Sprint

The first three places for all categories will receive medals and small prizes. The first 6 places of W/M21 WRE will be awarded separately.

Bonus

The relay consisting of 7 members from the same Club, finishing the race, will receive back a bonus of 200 EUR.

The relays attending three successive editions of Mentor Silva Relay Events, preserving all along the 3 years at least 4 athletes, will receive a bonus of 500 Eur.

More to see at the venue and in the surroundings of the event, in Argeş

- **Curtea de Argeş, medieval royal seat of Wallachia Country** – part of Romania and famous royal orthodox cathedral where Romanian kings rest along centuries, including Queen Mary of Romania.
- **Vidraru Lake** in beautiful Fagaras Mountains, the highest in Romania.
- **Transfagarasan Road**, according to Trip Advisor, citing the reviews made by Top Gear, “the most beautiful road in the world”.
- **Poienari Fortress of Vlad Tepes (Dracula)** is situated in Poienari, 25 km away from Curtea de Arges, on the way to crossing Fagaras Mountains on Transfagarasan Road and Vidraru Lake. It is a fearsome medieval fortress used by Vlad Tepes for defence against the Otomans. It takes 1480 stairs to climb to it, so...

